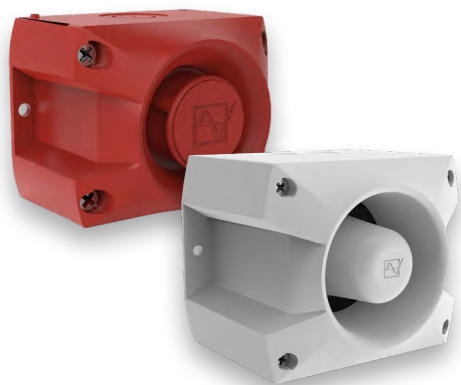


PATROL SOUNDERS 105/107 DB(A) PA 1 / PA 5



PATROL – the new generation of sounders.
Three dimensional innovation.

- Safe; an incorrect installation is virtually impossible.
- Easy; significantly shorter assembly and installation times.
- Economical; extremely high efficiency and good penetration of acoustical obstacles significantly reduce the required number of sounders.



reddot design award
winner 2013

IP 66	IK08	+55 °C -40 °C			EN 54-3	VdS	UL	10 Years	EAC	M12
protection system	impact-proof housing	operating temperature	acoustic penetration	external tone selection	24-48 V DC	24-48 V DC		warranty		connector (option)

PRODUCT	PA 1				PA 5			
DATA								
Operating range	195-253 V	95-127 V	18-30 V	10-57 V	195-253 V	95-127 V	18-30 V	10-57 V
	AC 50 60		DC		AC 50 60		DC	
Nominal current consumption ¹	9-15 mA	8-30 mA	59-120 mA	6-80 mA	9-15 mA	8-30 mA	59-120 mA	6-80 mA
Sound pressure level	105 dB(A)				107 dB(A)			
Sound pressure level @DIN-tone	104 dB(A)				105 dB(A)			
Sound level reduction	max. -16 dB via potentiometer							
Alarm tones	80 / 4 tones are externally selectable							
Operating temperature	-40 °C ... +55 °C							
Storage temperature	-40 °C ... +70 °C							
Relative humidity	90 %							
Protection system according to EN 6052	IP 66							
Protection class	II							
Duty cycle	100 %							
Material	PC / ABS blend similar to RAL 3000 (flame red) RAL 7035 (light grey) RAL 9003 (signal white)							
Cable entry	3x M20 M20 knock-outs on side, 1 knock-out on back				5x M20 knock-outs on side, 1 knock-out on back			
Integrated seal with cable entry	6-13 mm (feed-through grommet)							
Connecting terminals	2.5 mm ² fine wire with cable end sleeve, AWG 16							
Weight	405 g		270 g		778 g		643 g	

¹ Power consumption dependent on operating voltage.

OPTIONS/ACCESSORIES

				Enclosure fitting	Surface gasket	Tamper-proof sealing	Panel mounting kit
--	--	--	--	--------------------------	-----------------------	-----------------------------	---------------------------